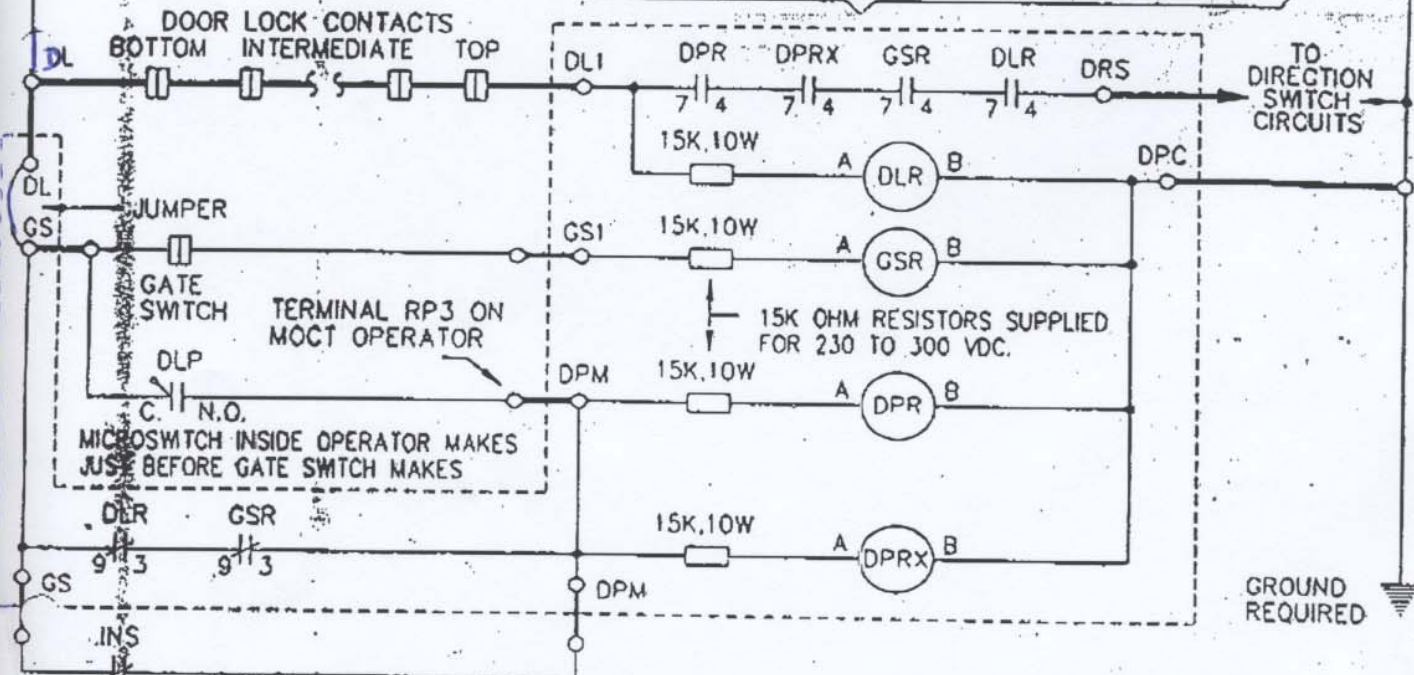


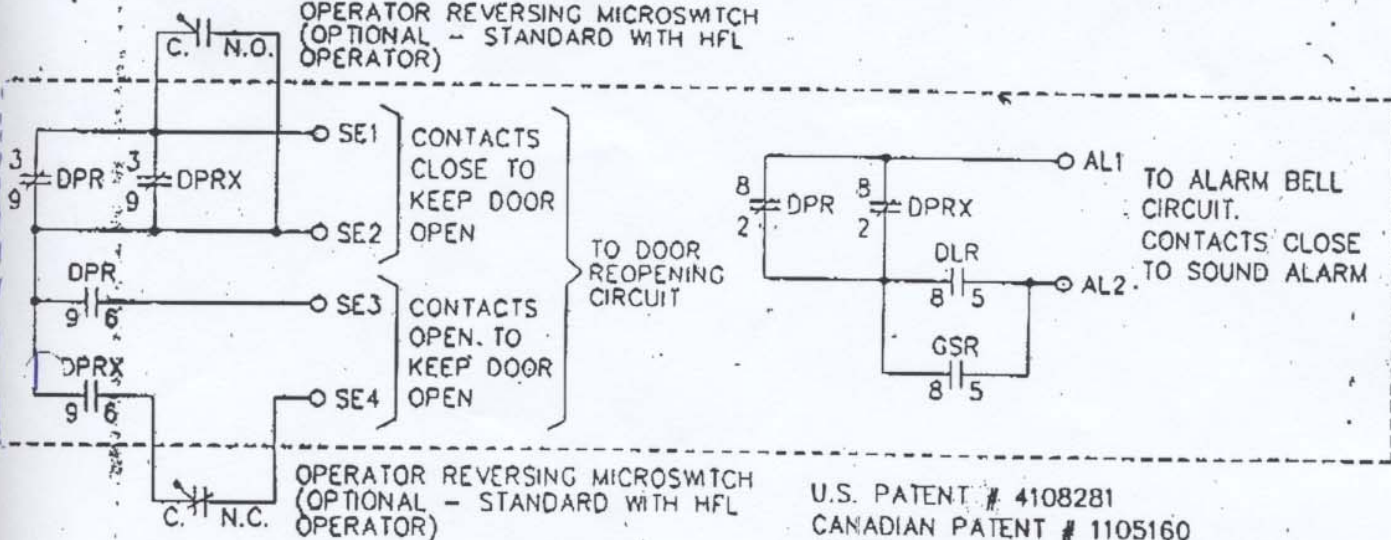
ADVISE EXISTING POWER SUPPLY  
( LINE MUST BE GROUNDED AS SHOWN )

MOVFR

CIRCUITS INSIDE DOTTED BOX ARE SUPPLIED BY G.A.L.  
AND LOCATED IN ELEVATOR MACHINE ROOM.  
HEAVY LINES DENOTE FIELD WIRING.



"INS" CONTACT LOCATED ON ELEVATOR CONTROLLER CLOSED ON INSPECTION OPERATION.  
NEEDED FOR ANY OPERATION WHICH REQUIRES THE CAR TO RUN WITH DOORS OPEN AND  
GATE OR DOOR LOCKS INTENTIONALLY BYPASSED. (ACCESS SWITCH OPERATION, ETC.)



U.S. PATENT # 4108281  
CANADIAN PATENT # 1105160  
OTHER U.S. AND FOREIGN PATENTS PENDING

|                                      |         |      |  |  |                |              |
|--------------------------------------|---------|------|--|--|----------------|--------------|
|                                      |         |      |                 | G.A.L. MANUFACTURING CORP.<br>50 E. 153rd STREET BRONX, N.Y. 10451 |                | SCALE NONE   |
|                                      |         |      |  |  |                | DWG. BY      |
|                                      |         |      |  |  | CHK. BY G.D.C. |              |
|                                      |         |      |  |  | DATE 12-10-93  |              |
| DESCRIPTION REVISED FROM HFL TO HFL  | 10-97   |      | <b>ELEVATOR DOOR TAMPERING SYSTEM</b><br>TYPE "FM" (FAULT MONITOR) ALSO SUPPLIED WITH HFL OPERATOR |  |                | <b>S7475</b> |
| ADDED OPERATOR REVERSING MICROSWITCH | 8-16-94 |      |  |  |                |              |
| REVISION                             | DATE    | CHK. |  |  |                |              |

~~Richard Taylor~~ Richard Taylor