



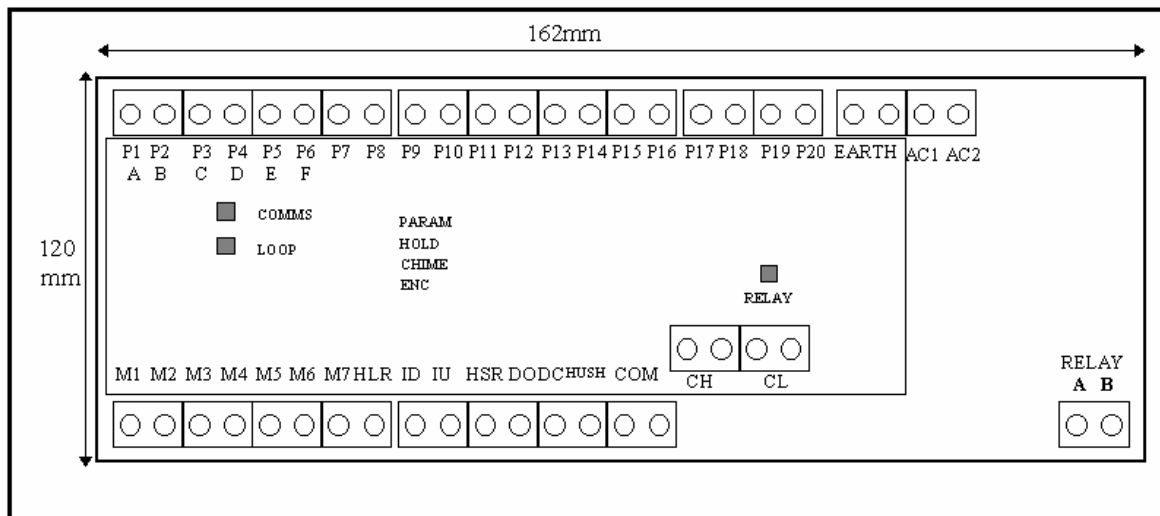
ILE MANUFACTURING LIMITED

Blaby Industrial Park, Winchester Avenue, Blaby,
Leicester, LE8 4GZ.
Telephone: 0116 2776599
Fax: 0116 2770201



Installation/wiring instructions for the I.L.E. serial control unit.

Power supply & input voltage range = 12 - 24V A.C. or D.C.
Power Supply peak current = 250mA
Relay "N/O volt free contact" specification = 5A@250V A.C.



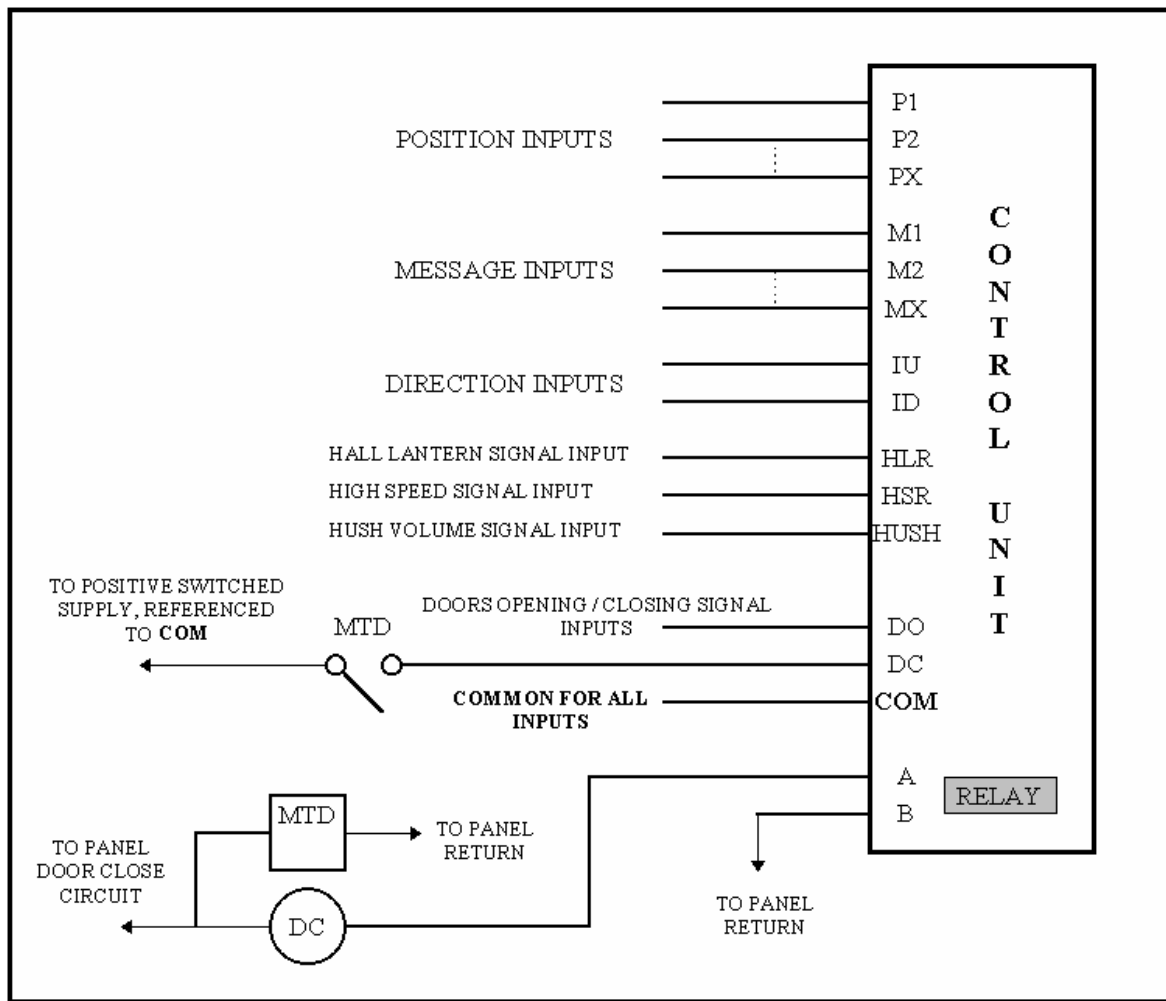
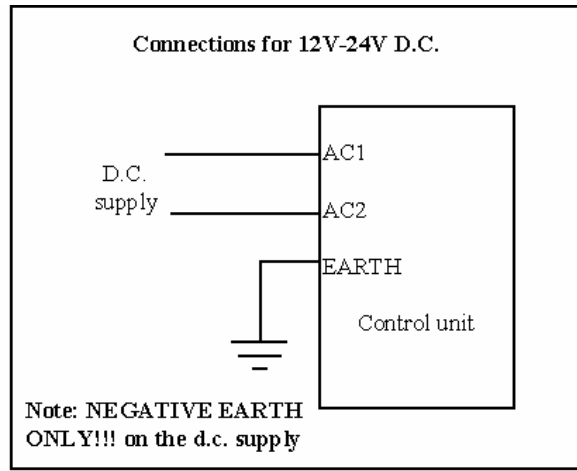
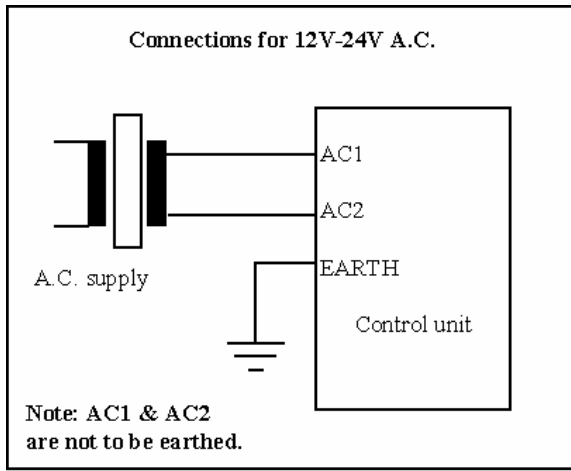
Inputs and Outputs.

AC1 & AC2	Power supply connections.	P1-P20	Non encoded positions inputs.
Earth	Earth connection.	A-F	Encoded position inputs.
CH / CL	Connections for serial communications.	M1-M7	Prioritised message inputs.
Relay A/B	Volt free contact for door control	HLR	Hall lantern signal input
PC comms	Connection for programming via a personal computer.	HSR	High speed signal input
		IU/ID	Direction inputs
		DO/DC	Doors opening / closing inputs.
		Hush	Speech unit alternate volume input.
		COM	Common terminal for all inputs.

Control unit DIL switch settings.

- PARAM** When in the "ON" position, default parameters will be used, otherwise the information downloaded to the control unit via a lap top or P.C. will be used.
- HOLD** When in the "ON" position, the direction arrows will only scroll when the HSR input is on as well as the direction. Otherwise the arrow will scroll all the time a direction input is on.
- CHIME** When in the "ON" position, the relay on the digital indicator within the lift car will operate whenever the "HLR" input is on (**i.e. passing chime**). Otherwise the relay will operate when the "HLR" input is on and the "HSR" input is off (**i.e. arrival gong output**).
- ENC** When in the "ON" position, the inputs P1 - P6 become encoded inputs A - F. These can be either "binary" encoded or "Gray code" depending upon the setting when programmed. Note the default is binary encoded.

A.C. / D.C. Power Supply Connections



Control unit relay operation.

The control unit relay is used to control the door closing sequence as follows:-

- i) The DC input is applied via the contact of the MTD relay.
- ii) The MTD message is announced. (i.e. “please mind the doors”).
- iii) When the MTD message has completed, the relay contact will close, allowing the doors to close. While the doors are closing the DC message will be announced.(i.e. “doors closing”).
- iv) If any message input is on, or if no MTD message is selected, there will be no MTD announcement and the relay contact will close as soon as the DC input is applied.(i.e. on fire control, doors do not want to delay closing).